

OVERVIEW

LightFlex™ LED is the industry's first commercial daylighting system with integrated tunable-white LED and lighting controls. It provides electric light, natural light, or a combination of both via the same lighting fixture.

The integrated daylighting sensor works in conjunction with an nLight® controls system so the LEDs can supplement daylight coming through the tubular system when more light is needed – optimizing energy savings and maximizing occupant access

Lightflex™ LED tunable-white is perfect in indoor applications such as classrooms, offices and conference rooms as it allows the LED light color temperature to be adjusted by the occupant to support various application-based tasks such as reading, meeting, teaching, or other uses.



eldoLED



DIFFUSER/LENS OPTIONS



OPTICS

Volumetric illumination is achieved by creating an optimal mix of light to walls, partitions and vertical and horizontal work surfaces – rendering the interior space, objects and occupants in a more balanced, complimentary luminous environment. High performance extruded diffusers conceal LEDs and efficiently deliver light in a volumetric distribution. Five diffuser choices available – curved and square designs with linear prisms or a smooth frosted finish.

A+ CAPABLE LUMINAIRE

This item is an A+ capable luminaire, which has been designed and tested to provide consistent color appearance and out-of-the-box control compatibility with simple commissioning.

- All configurations of this luminaire meet the Acuity Brands' specification for chromatic consistency
- This luminaire is part of an A+ Certified solution for nLight® control networks when ordered with drivers marked by a shaded background*
- This luminaire is part of an A+ Certified solution for nLight control networks, providing advanced control functionality at the luminaire level, when selection includes driver and control options marked by a shaded background*

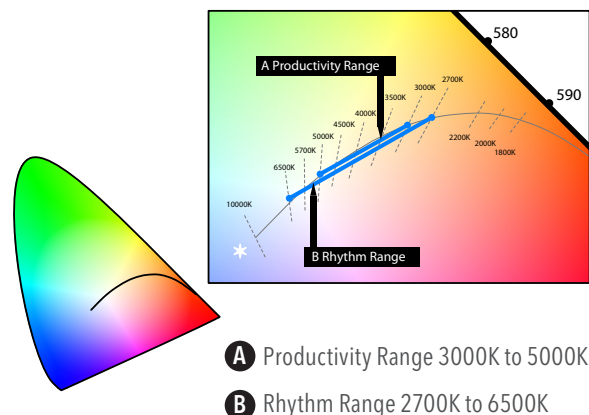
To learn more about A+, visit www.acuitybrands.com/aplus.

*See ordering tree for details

HIGHLIGHTS

- Simplifies design to implement daylight harvesting
- Provides color uniformity while providing the benefit of natural light throughout the day
- Reduces clutter in the ceiling and redundant lighting systems
- Provides the benefit of tunable-white lighting from 2700k-6500k during "LED-On" mode

RHYTHM and PRODUCTIVITY RANGE



LIGHTFLEX™ LED (SLFTL) tunable-white LED

CONSTRUCTION

LightFlex™ LED shall be Sunoptics® model SLFTL as manufactured by Sunoptics, an Acuity Brands Company, 6201 27th Street, Sacramento Ca. 95822 916/395-4700.

Signature™ Series Prismatic Skylight frame shall be fabricated from 6063-T5 aluminum, finish to be natural mill. Frames shall have integral condensation and weepage gutters which drain interior moisture to the outside. Corners shall be mitered and welded. The acrylic glazing shall be separated from the skylight frame with a Silicon Seal.

The integral curb shall be fabricated from .063" sheet aluminum on the exterior, corners heli-arc welded, and include a rigid insulation. The -21" (533mm) diameter light well shall be fabricated from 98% reflective MIRO-SILVER® with greater than 99% specular quality.

Round-to-square transition fabricated from 98% reflective MIRO-SILVER® with greater than 99% specular quality with integrated diffuser door frame. Multiple lens options available with differentiating luminous patterns and designs.

LED boards are accessible from below; driver is accessible from the plenum.

ELECTRICAL

Mainstream Dynamic Tunable White using nTune™ Technology:

nLight® enabled luminaires with nTune™ technology allow for all digital light color temperature control. This brings tunable white lighting control into the mainstream with repeatable, consistent results in an economical luminaire form and system already familiar to schools. Designers and facility operators are granted the freedom to tie scenes to specific activities or to complement colors or materials within a visual environment. nTune™ allows color temperature settings through the Rhythm Range of 2700K-6500K. The LightFlex LED also includes a digital nIO to control the Tunable White light allowing manual digital light color temperature control.

Refer to the Programming User's Guide for instructions on customizing to your application with SensorView™.

Integrated Sensor (nLight® Wired Networking): This sensor is nLight® enabled, meaning it has the ability to communicate over the nLight® network. When wired, using CAT-5 cabling, with other nLight-enabled sensors, power packs, or WallPods, an nLight control zone is created. The integrated sensor controls daylight harvesting and will close the louvers at night to help increase the performance of the LED's as well as diminish any light pollution.

Manual Louver Control: The LightFlex LED system includes manual control for the integrated louver giving the ability to effectively turn off the daylight.

Driver: eldoLED constant current driver option delivers choice of dimming range for ultra-smooth dimming resolution from 100% to less than 1%, and choices for control, while assuring flicker free, low current inrush, 89% efficiency and low EMI.

LISTINGS

HVHZ Approved. FM Approved. AAMA Certified. NFRC Certified. UL Certified to meet U.S. and Canadian standards,

CLEANING ACRYLIC LENSES

Frequency of cleaning is determined by site conditions. When cleaning acrylic lenses, use only water or water with a mild soap. Use a soft rag to minimize scratching the acrylic. A pressure washer is acceptable to use as well. Never use ammonia, aromatic or petroleum based products to clean acrylic lenses. This will cause deterioration and cracking of the lens and will void the warranty.

Skylights should not be installed in locations with an operating temperature in excess of -75° F or 180°F.

WARRANTY

5-year limited warranty. Complete warranty terms located at:
www.acuitybrands.com/CustomerResources/Terms_and_conditions.aspx

NOTE

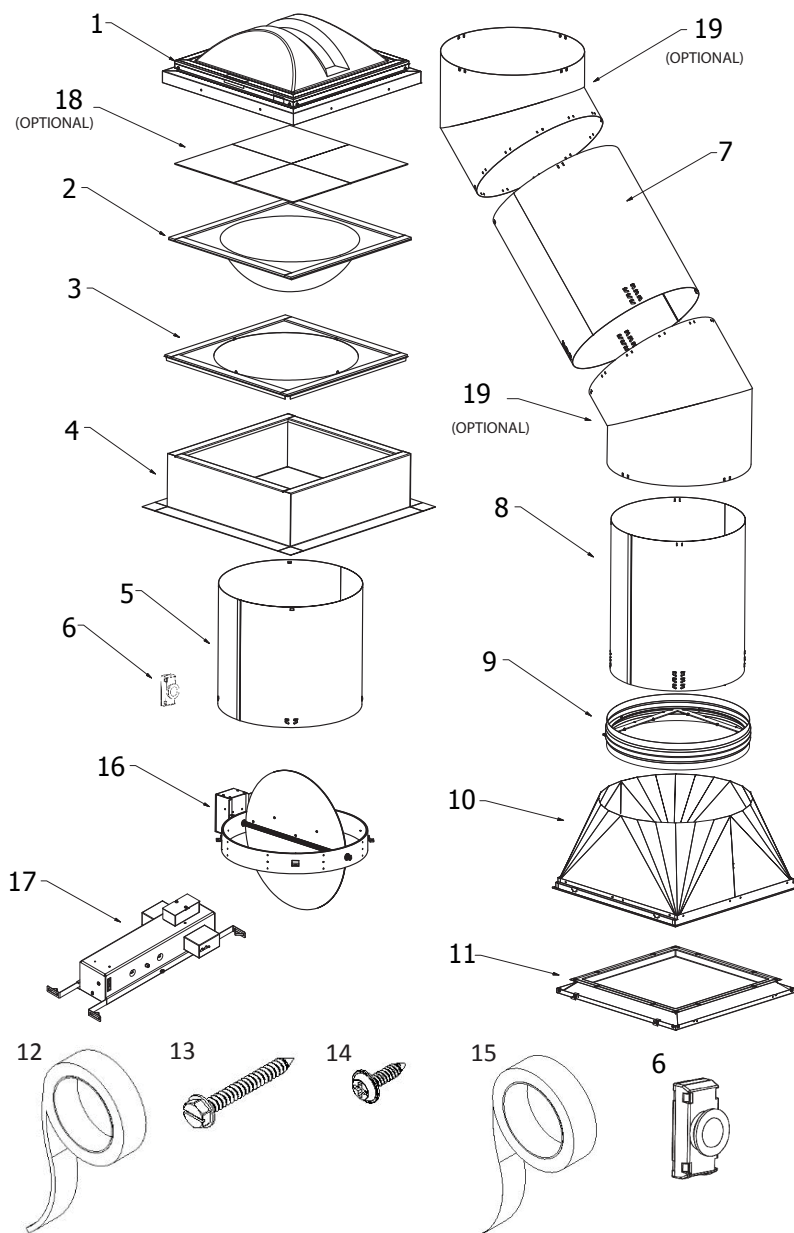
Actual performance may differ as a result of end-user environment and application. All values are design or typical values, measured under laboratory conditions at 25 °C.

Specifications subject to change without notice.

LIGHTFLEX™ LED (SLFTL) tunable-white LED

CLOSED CEILING INSTALLATION ONLY

The Sunoptics LightFlex™ LED system is design to be installed in suspended ceilings with T-Bar supports.



PARTS LIST

ITEM	DESCRIPTION	QTY
1	SIGNATURE SERIES SKYLIGHT ASSEMBLY	1
2	OPTICS SPHERE	1
3	CURB TRANSITION	1
4	CURB	1
5	18" ROOF CURB TOP TUBE ¹	1
6	nES ADCX LFT	1
7	24" LIGHT WELL TUBE #1 ^{1,2}	X
8	24" LIGHT WELL TUBE #2 ^{1,2}	1
9	LIGHTFLEX LED	1
10	ROUND-TO-SQUARE TRANSITION ¹	1
11	TROFFER LENS	X
12	WEATHER STRIPPING (ROLLS)	X
13	#10 DRILL TIP SCREWS	X
14	#8 DRILL TIP SCREWS	X
15	FOIL TAPE (ROLLS)	1
16	SINGLE BLADE LOUVER ^{1,2}	1
17	REMOTE DRIVER ENCLOSURE	1

OPTIONAL ITEMS

18	CCT Lens (Color Changing Lens)	1
19	ELBOWS ^{1,2}	1

NOTES:

X – Quantity Required is based on application and Customer Order.

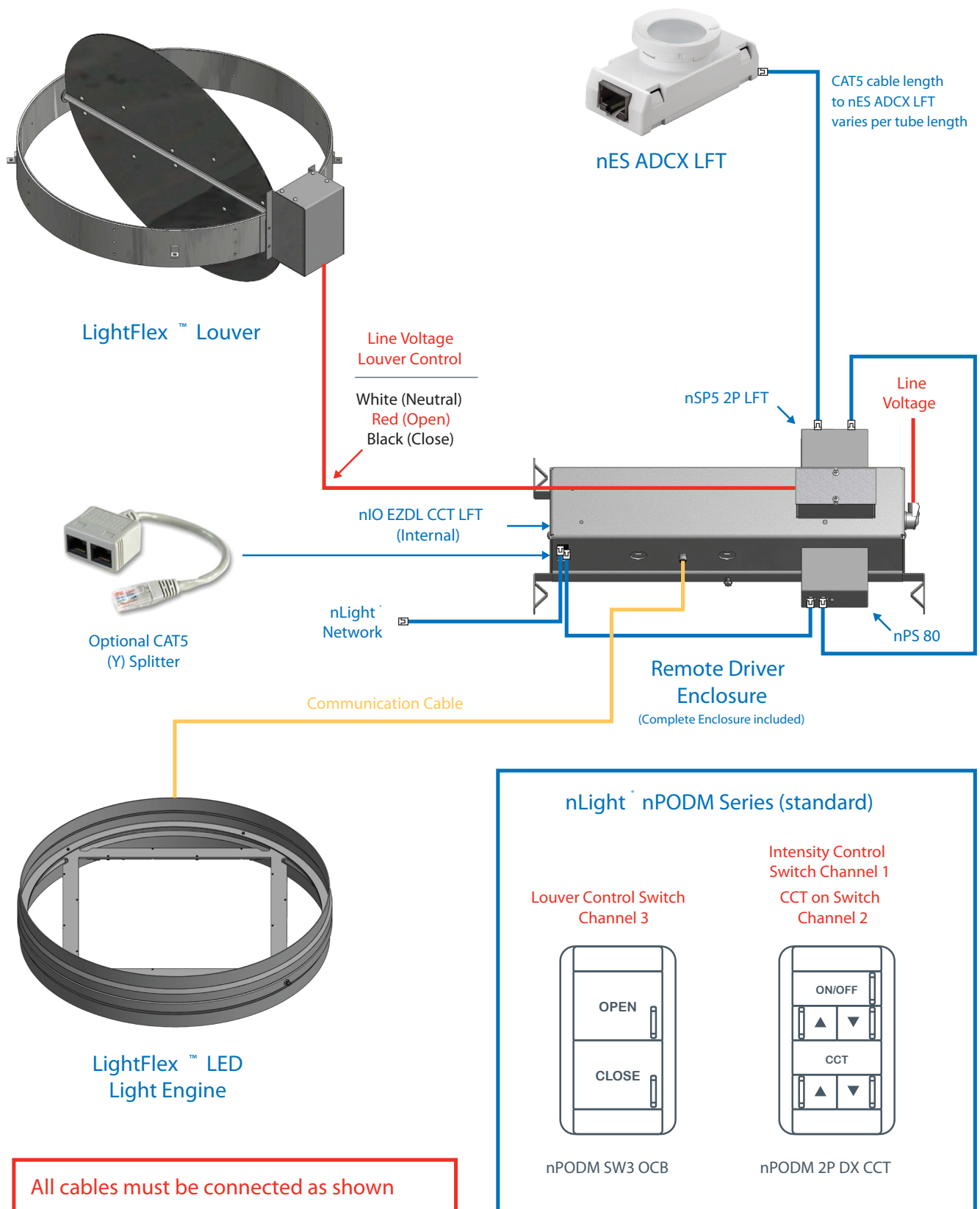
1) CAUTION: Handle Reflective Material with Care.

2) Components shown not included in all kits. See label on box.

*All Tubes & Elbows are fabricated from 98% Spectrally Reflective Material.

**Verify all materials are on site, and available for installation.

LIGHTFLEX™ LED (SLFTL) tunable-white LED



LIGHTFLEX™ LED (SLFTL) tunable-white LED



A+ Capable options indicated by this color background.

ORDERING INFORMATION

Lead times will vary depending on options selected. Consult with your sales representative.

Example: SLFTL TUWH RHYR NLT 80CRI 80+CRI (Default) 2108 SGZ CC2CL1 ALLED 6FT

SLFTL						
Series	Dynamic feature	Dynamic range	Control Interface Type	LED Color Rendering	Emergency Option	Curb Height
SLFTL LightFlex Tubular LED	TUWH Tunable white	RHYR 2700K-6500K	NLT nLight nTune Interface	80CRI 80+CRI (Default) 90CRI 90+CRI	blank Remote Driver Enclosure without Battery Pack (Default) E10W Remote Driver Enclosure with Battery Pack	2108 8 inch (203mm) (Default) 2114 14 inch (356mm)

Skylight Glazing	Skylight Lens Material	Diffuser Lens Style	Light Well Length	Option Group
SGZ Single Glaze (Default)	CC1 Polycarbonate	TLSBOX TLED Shadowbox Lens Assembly	4FT 4-Foot (1219mm) Shaft	ELBOWS Elbows for Obstructions (1 set)
DGZ Double Glaze	CC1CC2 Polycarbonate/Acrylic	TLA19 A19 Lens Assembly	6FT 6-Foot (1829mm) Shaft (Default)	ELBOWS2 Double Elbows for Obstructions (2 sets)
	CC2CL1 Acrylic Class 1 (Default)	TLMICPRIS TLED Microprism Lens Assembly	8FT 8-Foot (2438mm) Shaft	SUSKIT Suspension Wire Kit
	CC2CL3 Acrylic Class 3	TLSATIN TLED Satin Lens Assembly	10FT 10-Foot (3048mm) Shaft	SBAR Security Bar
		ACL ACLED Troffer Lens Assembly	12FT 12-Foot (3658mm) Shaft	
		ALLED ALLED Troffer (Default)	14FT 14-Foot (4267mm) Shaft	
			16FT 16-Foot (4877mm) Shaft	
			18FT 18-Foot (5486mm) Shaft	

nLight® Control Accessories:

Order as separate catalog number. Visit www.acuitybrands.com/products/controls/nlight.

WallPod stations¹

Louver Control

On/Off, Intensity Adjustment & CCT Control

Model number

nPODM SW3 LFT

nPODM 2P DX CCT

Occupancy sensors

Small motion 360°, ceiling (PIR / dual tech)

Large motion 360°, ceiling (PIR / dual tech)

Model number

nCM 9 RJB / nCM PDT 9 RJB

nCM10 RJB / nCM PDT 10 RJB

Cat-5 cable (plenum rated)

10' cable

30' cable

Model number

CAT5 10FT J1

CAT5 30FT J1

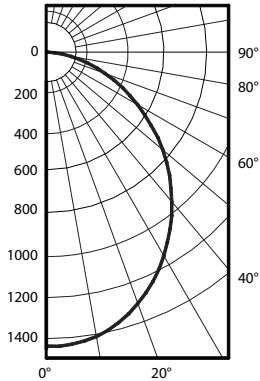
Notes

1 Both WallPod Stations needed for operation.

LIGHTFLEX™ LED (SLFTL) tunable-white LED

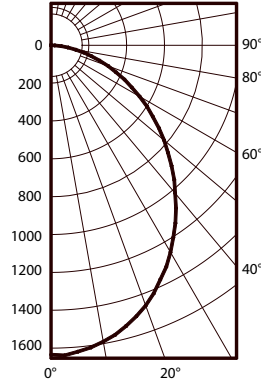
PHOTOMETRY

ACL DIFFUSER @3600K, 80CRI



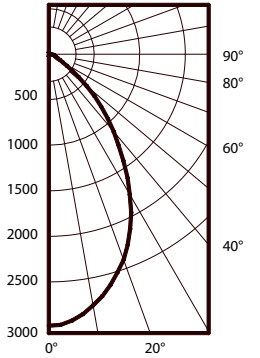
CP Summary		
	0°	90°
0°	1435	1435
5°	1431	1427
15°	1360	1356
25°	1222	1216
35°	1041	1037
45°	833	826
55°	610	600
65°	394	389
75°	195	193
85°	30	25
90°	0	0

ALLED DIFFUSER @3600K, 80CRI



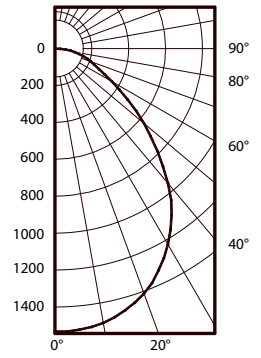
CP Summary		
	0°	90°
0°	1634	1634
5°	1624	1625
15°	1534	1546
25°	1366	1389
35°	1146	1180
45°	901	954
55°	657	719
65°	428	498
75°	220	277
85°	55	74
90°	1	0

TLA19 DIFFUSER @3600K, 80CRI



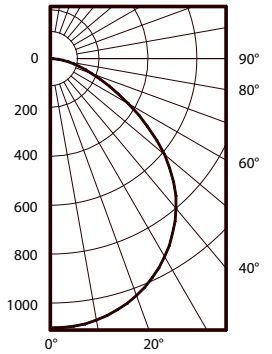
CP Summary		
	0°	90°
0°	2980	2980
5°	2933	2933
15°	2619	2621
25°	2113	2100
35°	1428	1421
45°	814	762
55°	313	276
65°	112	112
75°	73	91
85°	35	41
90°	2	1

TLMICPRIS DIFFUSER @3600K, 80CRI



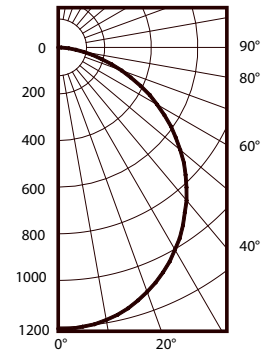
CP Summary		
	0°	90°
0°	1533	1533
5°	1529	1528
15°	1468	1468
25°	1327	1332
35°	1102	1106
45°	786	777
55°	482	475
65°	264	242
75°	159	141
85°	60	53
90°	1	0

TLSATIN DIFFUSER @3600K, 80CRI



CP Summary		
	0°	90°
0°	1101	1101
5°	1099	1099
15°	1065	1063
25°	988	988
35°	877	872
45°	720	714
55°	503	486
65°	279	266
75°	126	122
85°	33	33
90°	0	0

TLSBOX DIFFUSER @3600K, 80CRI



CP Summary		
	0°	90°
0°	1207	1207
5°	1203	1203
15°	1156	1159
25°	1068	1065
35°	938	933
45°	779	773
55°	597	591
65°	394	390
75°	198	192
85°	46	45
90°	0	0

PERFORMANCE DATA (RHYTHM RANGE)

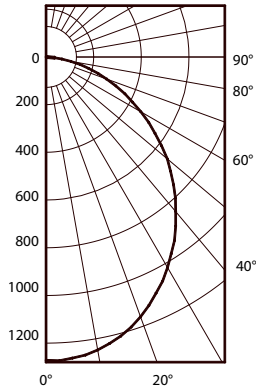
Diffuser Lens	ACL	ALLED	TLA19	TLMICPRIS	TLSATIN	TLSBOX
80CRI						
2700K	3632	4143	4228	3357	2893	3346
3000K	3591	4097	4180	3319	2860	3308
3500K	3536	4034	4117	3269	2817	3258
4000K	3497	3990	4071	3233	2786	3222
4500K	3475	3964	4045	3212	2768	3201
5000K	3468	3956	4037	3206	2762	3195
5700K	3485	3976	4057	3222	2776	3211
6500K	3544	4043	4126	3276	2823	3265

* Absolute Photometry Results in Lumens, LED Output Only,
Photometric data has been generated using methods recommended by the IESNA

LIGHTFLEX™ LED (SLFTL) tunable-white LED

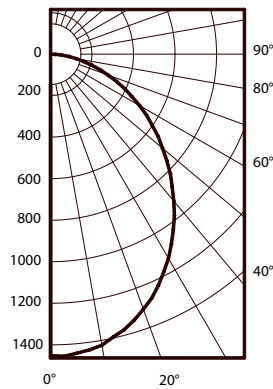
PHOTOMETRY continued...

ACL DIFFUSER @3600K, 90CRI



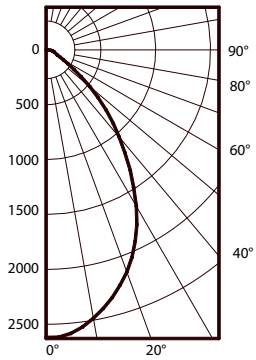
CP Summary		
	0°	90°
0°	1271	1271
5°	1268	1267
15°	1206	1211
25°	1086	1092
35°	929	939
45°	746	756
55°	549	558
65°	354	365
75°	178	185
85°	30	35
90°	1	1

ALLED DIFFUSER @3600K, 90CRI



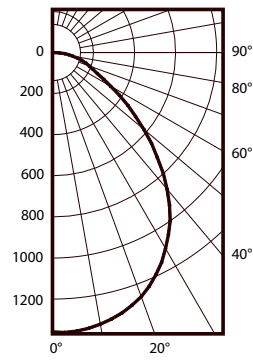
CP Summary		
	0°	90°
0°	1452	1452
5°	1444	1446
15°	1369	1373
25°	1233	1229
35°	1052	1031
45°	848	817
55°	644	598
65°	441	395
75°	247	206
85°	68	54
90°	0	3

TLA19 DIFFUSER @3600K, 90CRI



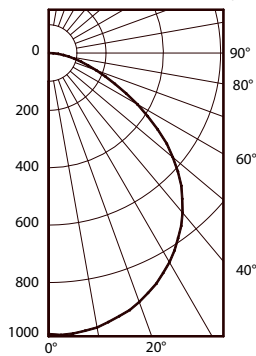
CP Summary		
	0°	90°
0°	2619	2619
5°	2575	2593
15°	2297	2335
25°	1865	1922
35°	1256	1338
45°	674	774
55°	252	312
65°	99	113
75°	82	79
85°	38	37
90°	0	5

TLMICPRIS DIFFUSER @3600K, 90CRI



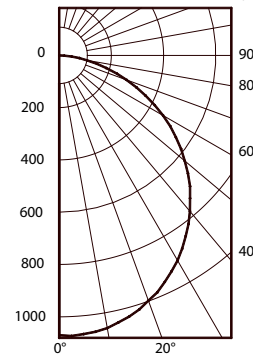
CP Summary		
	0°	90°
0°	1359	1359
5°	1357	1360
15°	1306	1311
25°	1185	1192
35°	990	999
45°	701	722
55°	431	449
65°	220	241
75°	127	148
85°	51	61
90°	1	4

TLSATIN DIFFUSER @3600K, 90CRI



CP Summary		
	0°	90°
0°	979	979
5°	977	981
15°	946	949
25°	879	887
35°	775	787
45°	633	654
55°	431	464
65°	235	255
75°	108	117
85°	27	33
90°	0	1

TLSBOX DIFFUSER @3600K, 90CRI



CP Summary		
	0°	90°
0°	1070	1070
5°	1069	1070
15°	1029	1034
25°	947	956
35°	833	844
45°	691	708
55°	528	545
65°	353	365
75°	177	187
85°	42	48
90°	0	1

PERFORMANCE DATA (RHYTHM RANGE)

Diffuser Lens	ACL	ALLED	TLA19	TLMICPRIS	TLSATIN	TLSBOX
90CRI						
2700K	3097	3532	3581	2863	2473	2854
3000K	3107	3543	3593	2872	2481	2864
3500K	3128	3567	3617	2892	2498	2883
4000K	3153	3595	3645	2914	2517	2906
4500K	3182	3628	3679	2941	2541	2932
5000K	3215	3666	3717	2972	2567	2963
5700K	3268	3727	3779	3021	2610	3012
6500K	3339	3808	3861	3087	2666	3077