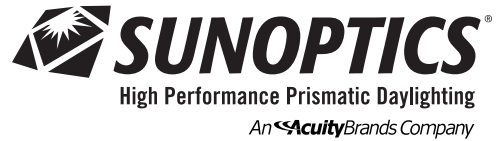


# Sunoptics LightFlex™

For Suspended-Ceiling Applications  
2'x4', or 4'x4' Square Daylighting System



## LightFlex™ Square System SLF

### KEY FEATURES

Larger Sizes Enable Less Roof Penetrations

Straight, 98% Reflective MIRO-SILVER® Interior Light Well with Greater than 99% Specular Quality

Acuity Brands Luminaire Diffuser Options to Complement your Lighting Design

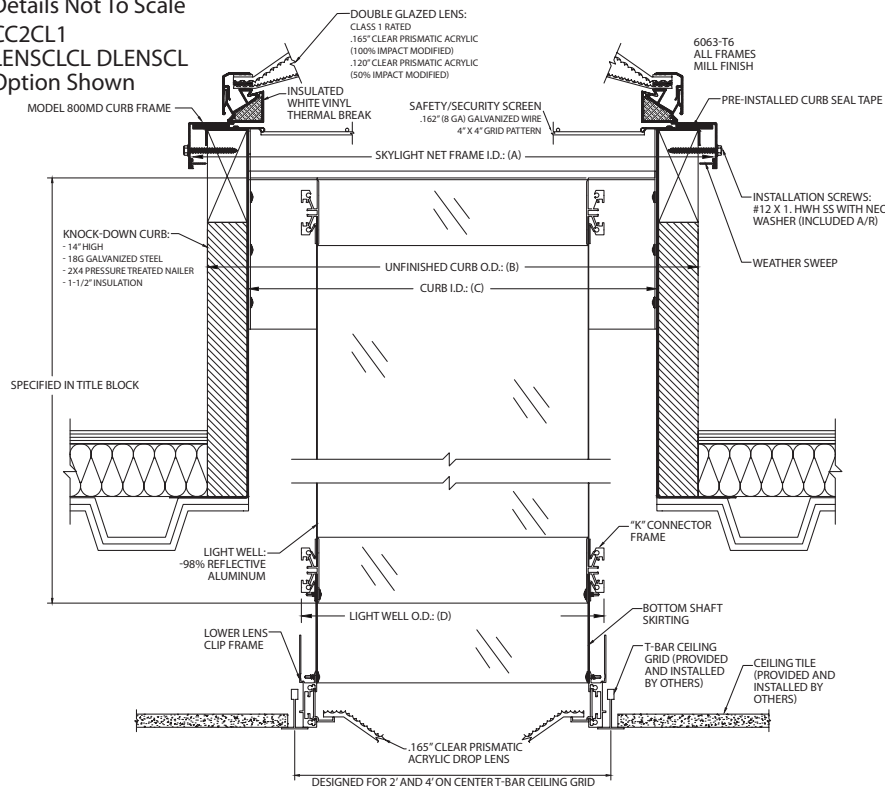
**Warranty:** 5-year and 10-year limited warranty available. Complete warranty terms located at: [www.acuitybrands.com/CustomerResources/Terms\\_and\\_conditions.aspx](http://www.acuitybrands.com/CustomerResources/Terms_and_conditions.aspx)

**Note:** Actual performance may differ as a result of end-user environment and application.

Specifications subject to change without notice.

### PRODUCT PROFILE

Details Not To Scale  
CC2CL1  
LENSCLCL DLENSCL  
Option Shown



Type	SHGC	U-Value
LightFlex - Acrylic/Acrylic	.24	.40
LightFlex - Poly/Acrylic	.24	.40
LightFlex - Poly/Poly	.24	.40

	2040	4040
A (net frame ID)	31-5/8" x 55-5/8"	55-5/8" x 55-5/8"
B (unfinished curb OD)	30-1/2" x 54-1/2"	54-1/2" x 54-1/2"
C (curb ID)	27-1/2" x 51-1/2"	51-1/2" x 51-1/2"
D (light well OD)	23-5/8" x 47-5/8"	47-5/8" x 47-5/8"

### AVAILABLE CERTIFICATIONS

HVHZ Approved  
FM Approved  
AAMA Certified  
NFRCC Certified

### SPECIFICATIONS

LightFlex shall be Sunoptics model 800SLC as manufactured by Sunoptics, an Acuity Brands Company, 6201 27th Street, Sacramento Ca. 95822 916/395-4700.

Signature Series Prismatic Skylight frame shall be fabricated from 6063-T5 aluminum, finish to be natural mill. Frames shall have integral condensation and weepage gutters which drain interior moisture to the outside. Corners shall be mitered and welded. The acrylic glazing shall be separated from the skylight frame with a Silicon Seal. The integral curb shall be fabricated from .063" sheet aluminum on the exterior, corners heli-arc welded, and include a rigid insulation. The interior, non-adjustable light well, shall be fabricated from 98% reflective MIRO-SILVER® with greater than 99% specular quality and include a lens clip frame at the shaft bottom. Please order roof curb separately. Consult Sunoptics roof curb specifications sheets for options.

**ROOF CURB:** Roof curb is ordered separately. Consult Sunoptics roof curb specification sheets for available options.

**OPTIONAL:** OSHA 1910 compliant 3/16" wire mesh, 6" O.C. welded Safety Security Guard. (4" O.C. CalOSHA Compliant guards are also available). 1/2" Round Steel Security Bars welded 8" O.C. Both directions.

**CONTROLS:** The LightFlex daylighting system is available both nLight®-enabled and with LC&D™ control systems, allowing integration of daylight and electric lighting.

Certain airborne contaminants can diminish the integrity of acrylic and/or polycarbonate lenses. Refer to the compatibility tables for suitable uses on our website.

Skylights not for use in Harsh, Corrosive, Marine and high-humidity Environmental Conditions such as Marina, Greenhouses, Petrol-Chemical facilities or other chemicals where the skylights may be exposed to such conditions.

**Cleaning Acrylic Lenses:** Frequency of cleaning is determined by site conditions. When cleaning acrylic lenses, use only water or water with a mild soap. Use a soft rag to minimize scratching the acrylic. A pressure washer is acceptable to use as well. Never use ammonia, aromatic or petroleum based products to clean acrylic lenses. This will cause deterioration and cracking of the lens and will void the warranty.

Skylights should not be installed in locations with an operating temperature in excess of -75° F or 180°F.

# ORDERING LOGIC

# LightFlex™ Square System SLF

					▶▶
--	--	--	--	--	----

Fixture	Unit Size	Lens Type	Glazing	Lens Material
SLF LightFlex Square System	2040 2'x 4'	SIGL Signature Series (Default)	SGZ Single Glaze	CC1CC2 Polycarbonate
	4040 4'x 4'		DGZ Double Glaze	CC1 Polycarbonate
				CC2CL1 Acrylic Class 1 (Default)
				CC2CL3 Acrylic Class 3

				▶▶
--	--	--	--	----

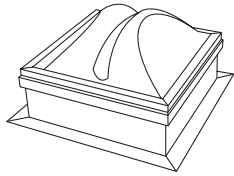
Lens Color	Diffusion Lens Colors	Diffusion Lens Material	Diffusion Lens Style
LENSWH White (Single Glaze Default) <sup>1</sup>	DLENSWH White Prismatic	CC1D Polycarbonate Diffusion Lens	ACL ACLED Trofer Lens Assembly (Default)
LENSCL Clear <sup>1</sup>	DLENSCL Clear Prismatic (Default)	CC2D Acrylic Diffusion Lens (Default)	TLSBOX TLED Shadowbox Lens Assembly
LENSWHCL White Clear <sup>2</sup>	<i>DLENSWH and DLENSCL only available with Metric Option</i>	<i>CC1D and CC2D only available with Metric Option</i>	TLA19 A19 Lens Assembly
LENSCLWH Clear White (Double Glaze Default) <sup>2</sup>			TLMICPRIS TLED Microprism Lens Assembly
LENSWHWH White White <sup>2</sup>			TLSATIN TLED Satin Lens Assembly
LENSCLCL Clear Clear <sup>2</sup>			

--	--	--	--	--

Unit Type	Shaft Length	Skylight Frame Finish	Options
800MD Standard Frame (Default)	2FT 2-Foot Shaft	MI Mill (Default)	(blank) No Options
	3FT 3-Foot Shaft	WH White	FMRTG Factory Mutual Approved
	4FT 4-Foot Shaft	BZ Bronze	HVHZ High Velocity Hurricane Zone
	5FT 5-Foot Shaft	CF Custom	CE European Standard Certified
	6FT 6-Foot Shaft		LARR Los Angeles Approved
	7FT 7-Foot Shaft		ITBR Insulated thermal break
	8FT 8-Foot Shaft		NITBR No Insulated Thermal Break
	9FT 9-Foot Shaft		WSW Weather Sweep
	10FT 10-Foot Shaft		NWSW No Weather Sweep
	11FT 11-Foot Shaft		NOSCREW No Installation Screw
	12FT 12-Foot Shaft		METRIC 600mm x 600mm Ceiling Grid Pattern
	13FT 13-Foot Shaft		
	14FT 14-Foot Shaft		
	15FT 15-Foot Shaft		
	16FT 16-Foot Shaft		

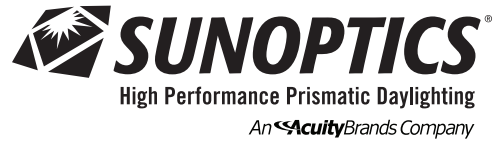
Please order roof curb separately. Consult Sunoptics roof curb specifications sheets for options.





# Sunoptics LightFlex™

For Suspended-Ceiling Applications  
2'x4', or 4'x4' Square Daylighting System



## LightFlex™ Square System SLF

### KEY FEATURES

Larger Sizes Enable Less Roof Penetrations

Straight, 98% Reflective MIRO-SILVER® Interior Light Well with Greater than 99% Specular Quality

Acuity Brands Luminaire Diffuser Options to Complement your Lighting Design

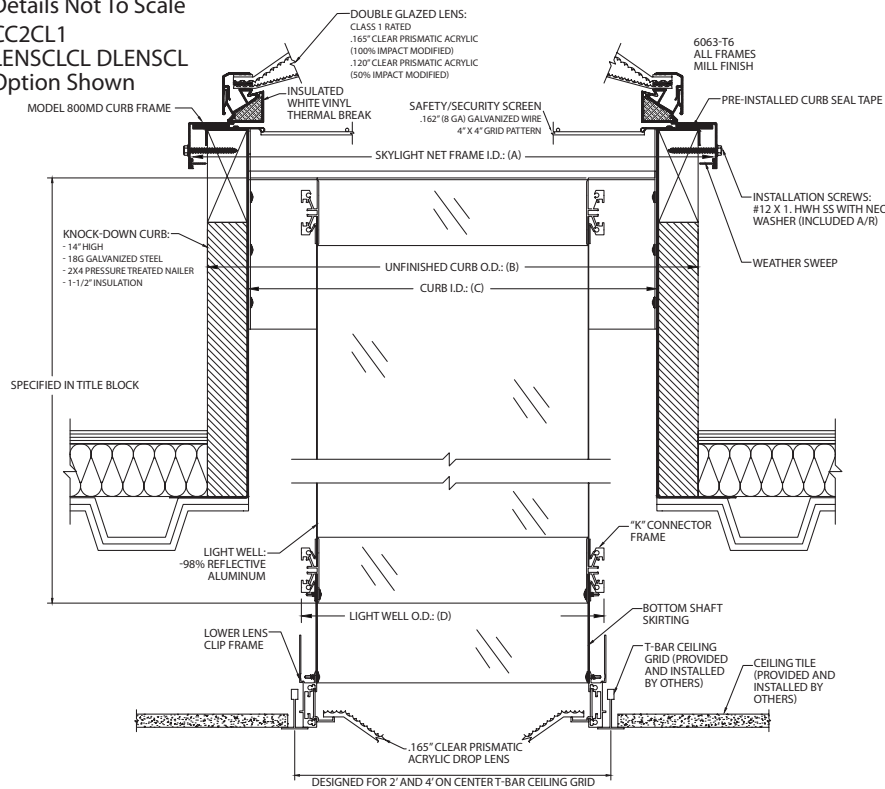
**Warranty:** 5-year and 10-year limited warranty available. Complete warranty terms located at: [www.acuitybrands.com/CustomerResources/Terms\\_and\\_conditions.aspx](http://www.acuitybrands.com/CustomerResources/Terms_and_conditions.aspx)

**Note:** Actual performance may differ as a result of end-user environment and application.

Specifications subject to change without notice.

### PRODUCT PROFILE

Details Not To Scale  
CC2CL1  
LENSCLCL DLENSCL  
Option Shown



Type	SHGC	U-Value
LightFlex - Acrylic/Acrylic	.24	.40
LightFlex - Poly/Acrylic	.24	.40
LightFlex - Poly/Poly	.24	.40

	2040	4040
A (net frame ID)	31-5/8" x 55-5/8"	55-5/8" x 55-5/8"
B (unfinished curb OD)	30-1/2" x 54-1/2"	54-1/2" x 54-1/2"
C (curb ID)	27-1/2" x 51-1/2"	51-1/2" x 51-1/2"
D (light well OD)	23-5/8" x 47-5/8"	47-5/8" x 47-5/8"

### AVAILABLE CERTIFICATIONS

HVHZ Approved  
FM Approved  
AAMA Certified  
NFRF Certified

### SPECIFICATIONS

LightFlex shall be Sunoptics model 800SLC as manufactured by Sunoptics, an Acuity Brands Company, 6201 27th Street, Sacramento Ca. 95822 916/395-4700.

Signature Series Prismatic Skylight frame shall be fabricated from 6063-T5 aluminum, finish to be natural mill. Frames shall have integral condensation and weepage gutters which drain interior moisture to the outside. Corners shall be mitered and welded. The acrylic glazing shall be separated from the skylight frame with a Silicon Seal. The integral curb shall be fabricated from .063" sheet aluminum on the exterior, corners heli-arc welded, and include a rigid insulation. The interior, non-adjustable light well, shall be fabricated from 98% reflective MIRO-SILVER® with greater than 99% specular quality and include a lens clip frame at the shaft bottom. Please order roof curb separately. Consult Sunoptics roof curb specifications sheets for options.

**ROOF CURB:** Roof curb is ordered separately. Consult Sunoptics roof curb specification sheets for available options.

**OPTIONAL:** OSHA 1910 compliant 3/16" wire mesh, 6" O.C. welded Safety Security Guard. (4" O.C. CalOSHA Compliant guards are also available). 1/2" Round Steel Security Bars welded 8" O.C. Both directions.

**CONTROLS:** The LightFlex daylighting system is available both nLight®-enabled and with LC&D™ control systems, allowing integration of daylight and electric lighting.

Certain airborne contaminants can diminish the integrity of acrylic and/or polycarbonate lenses. Refer to the compatibility tables for suitable uses on our website.

Skylights not for use in Harsh, Corrosive, Marine and high-humidity Environmental Conditions such as Marina, Greenhouses, Petrol-Chemical facilities or other chemicals where the skylights may be exposed to such conditions.

**Cleaning Acrylic Lenses:** Frequency of cleaning is determined by site conditions. When cleaning acrylic lenses, use only water or water with a mild soap. Use a soft rag to minimize scratching the acrylic. A pressure washer is acceptable to use as well. Never use ammonia, aromatic or petroleum based products to clean acrylic lenses. This will cause deterioration and cracking of the lens and will void the warranty.

Skylights should not be installed in locations with an operating temperature in excess of -75° F or 180°F.

# ORDERING LOGIC

# LightFlex™ Square System SLF

					▶▶
--	--	--	--	--	----

Fixture	Unit Size	Lens Type	Glazing	Lens Material
SLF LightFlex Square System	2040 2'x 4'	SIGL Signature Series (Default)	SGZ Single Glaze	CC1CC2 Polycarbonate
	4040 4'x 4'		DGZ Double Glaze	CC1 Polycarbonate
				CC2CL1 Acrylic Class 1 (Default)
				CC2CL3 Acrylic Class 3

			▶▶
--	--	--	----

Lens Color	Diffusion Lens Colors	Diffusion Lens Material	Diffusion Lens Style
LENSWH White (Single Glaze Default) <sup>1</sup>	DLENSWH White Prismatic	CC1D Polycarbonate Diffusion Lens	ACL ACLED Trofer Lens Assembly (Default)
LENSCL Clear <sup>1</sup>	DLENSCL Clear Prismatic (Default)	CC2D Acrylic Diffusion Lens (Default)	TLSBOX TLED Shadowbox Lens Assembly
LENSWHCL White Clear <sup>2</sup>	<i>DLENSWH and DLENSCL only available with Metric Option</i>	<i>CC1D and CC2D only available with Metric Option</i>	TLA19 A19 Lens Assembly
LENSCLWH Clear White (Double Glaze Default) <sup>2</sup>			TLMICPRIS TLED Microprism Lens Assembly
LENSWHWH White White <sup>2</sup>			TLSATIN TLED Satin Lens Assembly
LENSCLCL Clear Clear <sup>2</sup>			

--	--	--	--

Unit Type	Shaft Length	Skylight Frame Finish	Options
800MD Standard Frame (Default)	2FT 2-Foot Shaft	MI Mill (Default)	(blank) No Options
	3FT 3-Foot Shaft	WH White	FMRTG Factory Mutual Approved
	4FT 4-Foot Shaft	BZ Bronze	HVHZ High Velocity Hurricane Zone
	5FT 5-Foot Shaft	CF Custom	CE European Standard Certified
	6FT 6-Foot Shaft		LARR Los Angeles Approved
	7FT 7-Foot Shaft		ITBR Insulated thermal break
	8FT 8-Foot Shaft		NITBR No Insulated Thermal Break
	9FT 9-Foot Shaft		WSW Weather Sweep
	10FT 10-Foot Shaft		NWSW No Weather Sweep
	11FT 11-Foot Shaft		NOSCREW No Installation Screw
	12FT 12-Foot Shaft		METRIC 600mm x 600mm Ceiling Grid Pattern
	13FT 13-Foot Shaft		
	14FT 14-Foot Shaft		
	15FT 15-Foot Shaft		
	16FT 16-Foot Shaft		

Please order roof curb separately. Consult Sunoptics roof curb specifications sheets for options.

